

MarketView[®] ExcelTools

ExcelTools Toolbar



- Quote:** pull streaming market data.
- History:** pull historical data and display in a variety of time series aggregations.
- Chart:** insert a chart along with the supporting historical data.
- Curve:** insert a curve along with the relevant data points from the futures contracts.
- Properties:** shows the meta data of the curve (only available if Curve Builder is licensed).
- Option Chain:** insert options quote data by put/call, strike price, and by month/commodity.
- Matrix:** inserts spread/strip matrix style table for futures roots.
- Table:** shows the complete set of curve data plus meta data (only available if CurveBuilder is licensed).
- Calendars:** Extract a list of predefined holiday and rollover calendars from CurveBuilder (only available if CurveBuilder is licensed).
- Update:** updates static data with the latest available information.
- Export:** send spreadsheets to colleagues.
- Studio:** create and edit user defined formulas.
- Settings:** set or change your login credentials, customize toolbar.
- Help:** link to online help guide.
- Examples:** pre-loaded and formatted les with data from the add-in.

MarketScript Studio

Create and modify existing user defined formulas.

- Click on the **Studio** button.



- Click the function from select function.
 - Edit the formula name and description.
 - Enter the parameters for the chosen function.
 - Test the formula to verify the data is correct.
- Click **OK** to finish off the process and save the formula.

Quotes and Historical Query

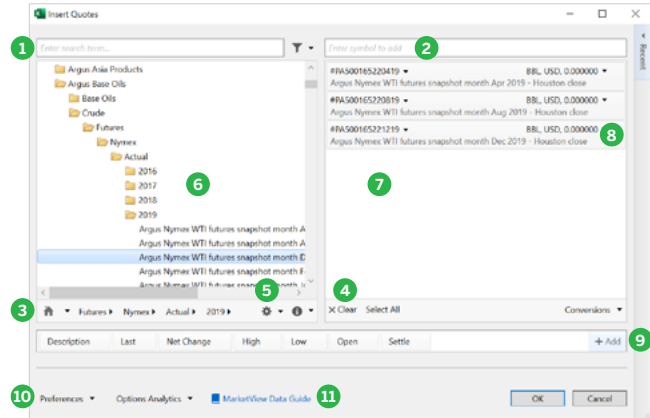
- Select the **Quotes** icon to insert Real-Time Quotes.
- Select symbols to appear on the query with one of following options:
 - Enter specific symbols into the symbol field at the top right of the dialog box, press **ENTER** when done. Ex: Enter /CLZ14 for December 2014 Light Sweet Crude Oil Futures.
 - Enter a phrase to search for in the field marked "Search."
 - Use the Symbol Tree to navigate through the exchanges and categories to find the desired symbol.
- Select the data fields you want to include using the field selector.
- Select **OK** to insert the live data.
- Data is automatically pulled into the spreadsheet as new information is received from providers.

- Select the **History** icon to insert Historical Query.
- 3. Refer to Quotes above.
- Set the time frequency and amount of the historical data to extract.
- Choose additional display settings by clicking the Preferences link.

Modify Quote or Historical Query

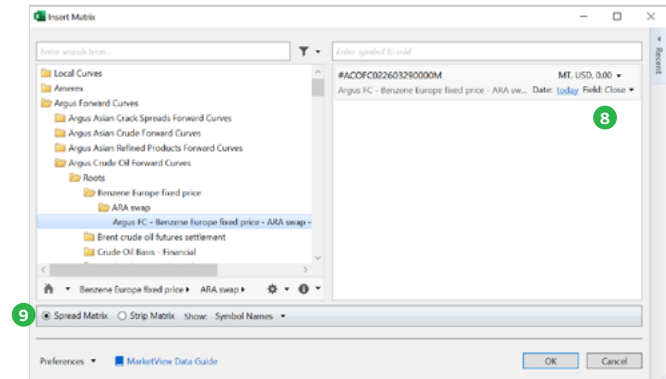
- Click on the Asterisk located in upper left hand corner of the data pull.
- Click on Quote or History icon to make changes.

Quote Dialog Box



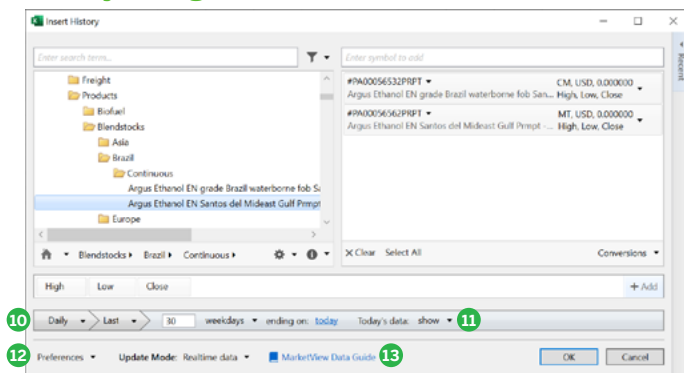
- SEARCH:** Enter one or more words that describe the symbol or category.
- Enter the specific symbols here.
- Click the **HOME** icon to go back to the start of the Symbol Tree.
- Click the **X** to Clear all the selected symbols.
- Displays any Filters saved in the Symbol Tree Settings. Click the **Settings** icon to change the View (Tree or Slider) Filters.
- The left side displays the results of a **SEARCH**, or the symbols found by moving through the Symbol Tree.
- Symbols selected to appear are listed in the right side of the dialog box. The Unit of Measure and Currency and Decimal Precision are displayed for each symbol, and can be changed by clicking on the drop down arrow to the right hand side of them.
- Remove a symbol by clicking on it once, then clicking "**X**."
- Add or delete data fields. Change the order in which they are displayed by dragging and dropping them.
- Additional display settings (rows or columns, data header format) are chosen in the Preferences area of the dialog box.
- The MarketView Data Guide opens this page <https://www.marketview.com/marketview/data-guide/index.html> which lists commonly used symbols.

Matrix Dialogue Box



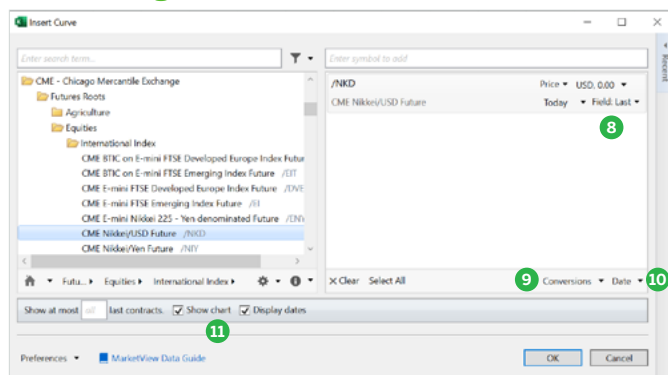
- 7. Refer to **Quote** Dialog Box.
- Change the benchmark fields and dates for the Spread or Strip Matrix table to be plotted against by simply clicking on the required area.
- Choose between a Spread or Strip Matrix and which description to display from symbol names, expiration dates, or continuous symbol names.

History Dialog Box



- 1 - 9. Refer to **Quote Dialog Box**.
10. Select the time series (Daily, Weekly, Monthly, Contract Monthly, Quarterly, Yearly, Intraday, Seasonal) and either the number of records back or date range.
11. Show or Hide today's data.
12. Additional display settings (rows or columns, data header format) are chosen in the Preferences area of the dialog box.
13. The MarketView Data Guide opens this page <https://www.marketview.com/marketview/data-guide/index.html> which lists commonly used symbols.

Curve Dialog Box



- 1 - 7. Refer to **Quote Dialog Box**.
8. Change the benchmark fields and dates for the Curve to be plotted against by simply clicking on the required area.
9. Select currency conversion, curve options, and precision
10. Selected the desired date range of the curve
11. Change the display options of your request by specifying contracts to be shown, showing/hiding the chart, and displaying/hiding the corresponding dates.

Contract Month Codes

Futures Contract Monthly Codes: Jan (F) Feb (G) Mar (H) Apr (J) May (K) June (M) July (N) Aug (Q) Sept (U) Oct (V) Nov (X) Dec (Z)

More Help

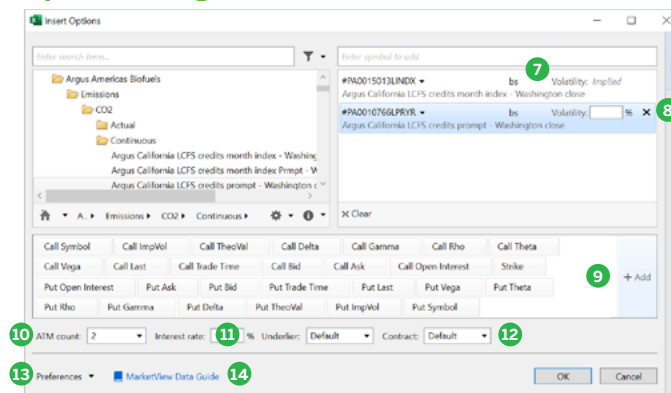
Tradingandrisksupport@enverus.com

North America: +1 800 394 1220

Europe/Africa: +44 207 002 7550

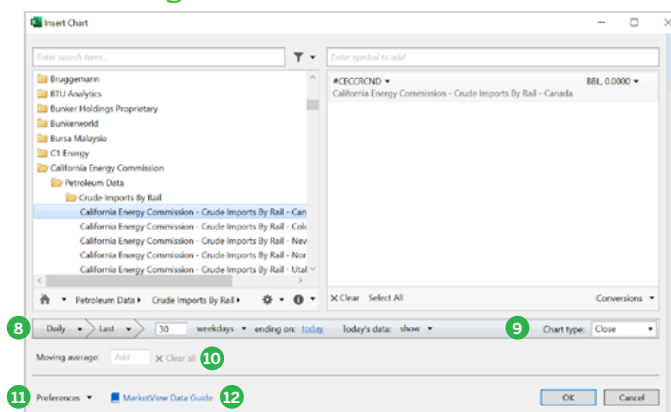
Asia-Pac/Middle East: +65 31 657589

Options Dialog Box



- 1 - 6. Refer to **Quote Dialog Box**.
7. Underlying symbols selected to appear on your spreadsheet are listed in the right side of the dialog box. The Options Volatility and Model are displayed for each underlier, and can be changed by clicking on them, bs in this case representing a Black-Scholes model.
8. Remove a symbol by clicking on it once, then clicking the "X" that displays. You may also change the Implied Volatility, if desired. Valid settings are Implied, Historical, and Actual.
9. Add or delete data fields display in the spreadsheet. You can also change the order in which they are displayed by dragging and dropping them.
10. "At the Money" (ATM) provides the opportunity to configure the number of strike prices you want to see on either side of the At The Money price.
11. The risk-free Interest Rate.
12. Edit between the Underlier and Contract value being used. The options are Last, Bid, Ask, Mid, Settle, Close, Most Recent Value.
13. Additional display settings are chosen in the Preferences.
14. The MarketView Data Guide opens this page <https://www.marketview.com/marketview/data-guide/index.html> which lists commonly used symbols.

Chart Dialog Box



- 1 - 7. Refer to **Quote Dialog Box**.
8. Select the time series (Daily, Weekly, Monthly, Quarterly, Yearly, Intraday, Seasonal) and either the number of records back or date range.
9. Select the Chart Type of your choice (Open, High, Low, Close, Midpoint, Volume, Candlestick, or Bar Chart).
10. Add a moving average and specify the number of days in which to average the data set.
11. Additional display settings are chosen in the Preferences.
12. The Marketview Data Guide opens this page <https://www.marketview.com/marketview/data-guide/index.html> which lists commonly used symbols.